

## Smart DIY Digital triangle light panel



### Item list

6pcs/set, include 1pcs power adapter, 6pcs triangle light, 6pcs connecting parts, 18pcs 3M tape, 12pcs mounting kit and 1 flexible ruler.  
 12pcs/set, include 1pcs power adapter, 12pcs triangle light, 12pcs connecting parts, 36pcs 3M tape, 24pcs mounting kit and 1 flexible ruler.  
 9pcs/set, include 1pcs power adapter, 9pcs triangle light, 9pcs connecting parts, 27pcs 3M tape, 18pcs mounting kit and 1 flexible ruler.



APP control



IR remote control



Digital mode



Music mode

### Product parameters

Plug-in power adapter		Triangle light panels					
Plug type	US plug	Model	FWWSCB-33-6	Model	FWWSCB-33-9	Model	FWWSCB-33-12
Input voltage	100-240VAC 50-60Hz	Power	18W	Power	24W	Power	36W
Plug type	EU / AU / UK plug	Voltage	DC 24V	Voltage	DC 24V	Voltage	DC 24V
Input voltage	220-240VAC 50-60Hz	Connection	APP+music	Connection	APP+music	Connection	APP+music
Output voltage	DC 24V	Protocol	WiFi+IR+Bluetooth	Protocol	WiFi+IR+Bluetooth	Protocol	WiFi+IR+Bluetooth
Power	24W/24W/36W	Colour	RGBIC	Colour	RGBIC	Colour	RGBIC
		Sensitivity	>50DB	Sensitivity	>50DB	Sensitivity	>50DB
		IP grade	IP40	IP grade	IP40	IP grade	IP40

### Product functions

- ▶ This product adopts DIY smart splicing scheme, which can splice and shape according to customer needs.
- ▶ Cool lighting effects, colorful, flowing water, rainbow, horse racing, change the light with the music.
- ▶ The appearance is classic, the structure is compact, different shapes can be spliced, and the installation is convenient.
- ▶ Adopt APP+music control method.
- ▶ High-quality RGB, and multiple conversion modes.
- ▶ Low-voltage 24V power supply, any single product is used to supply power for the overall shape.

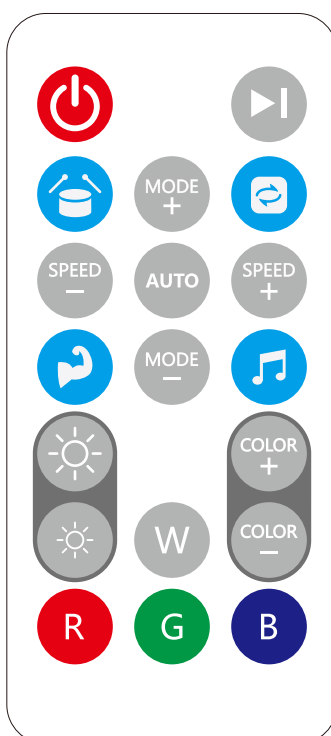
### Parameters & Functions of remote control

#### Product Brief:

The 19-key infrared remote control can remotely realize the functions of various modes such as lamps, phantom color, flowing water, and music. Remote control music 4 kinds of music modes.

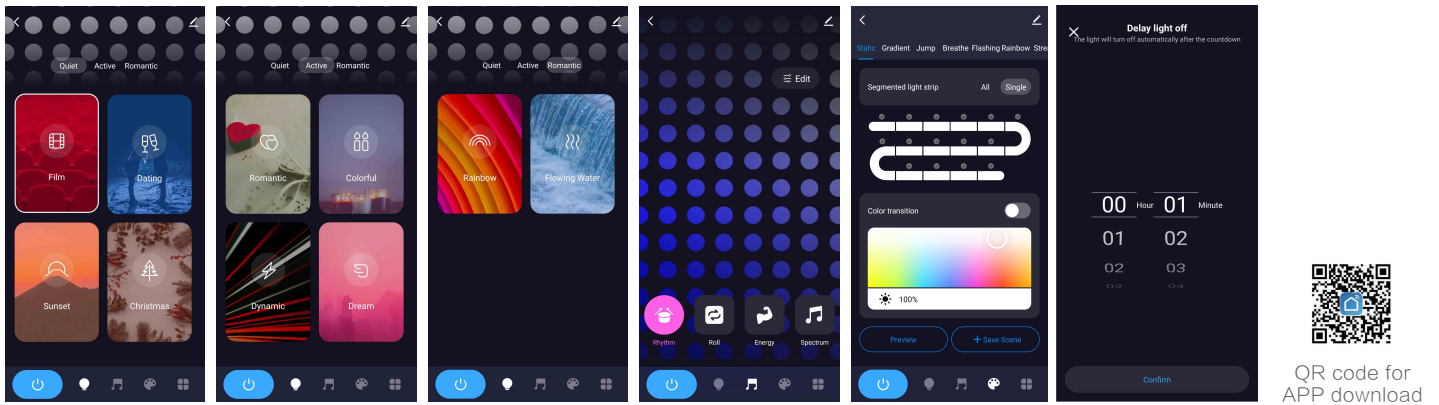
#### Product parameters:

Power supply mode: button battery, 3V voltage input.  
 Control distance: 5-8 meters under open conditions.



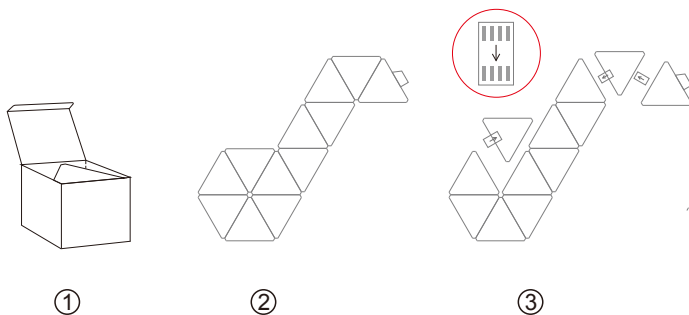
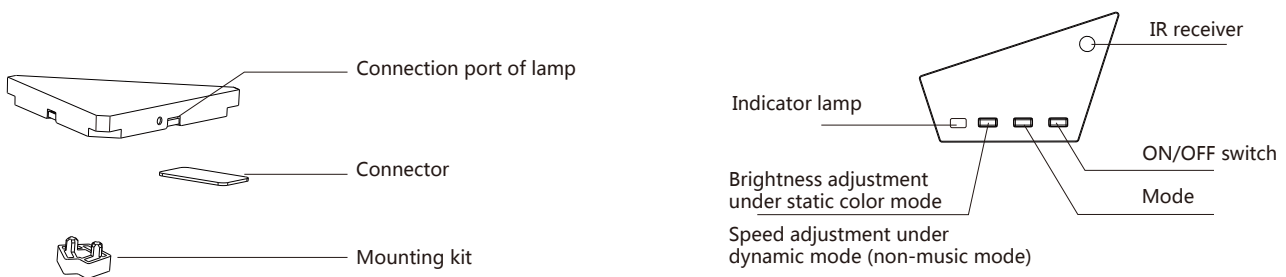
Features	action	Remote control buttons
ON/OFF	Short Press	
Music mode pause/beat	Short Press	
Speed/sensitivity	Short Press	
Dynamic mode switching	Short Press	
Music mode	Short Press	
Automatic mode	Short Press	
Brightness +/-	Short Press	
Static color switching	Short Press	
W R G B	Short Press	

## APP function

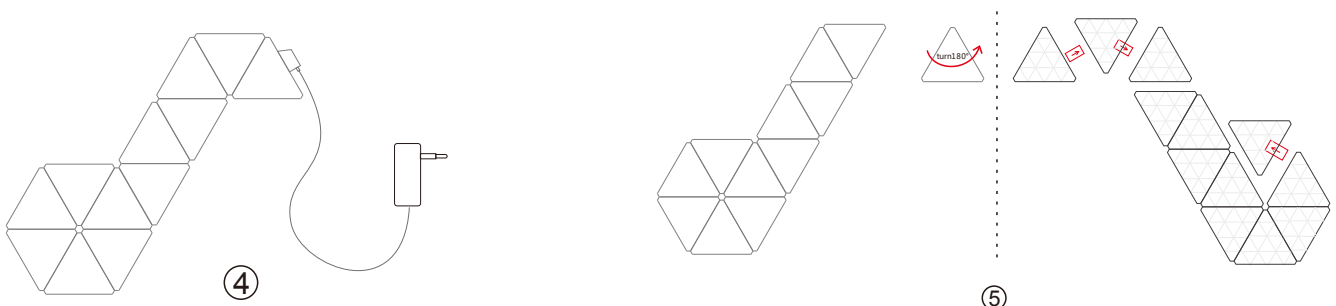


## Installation diagram

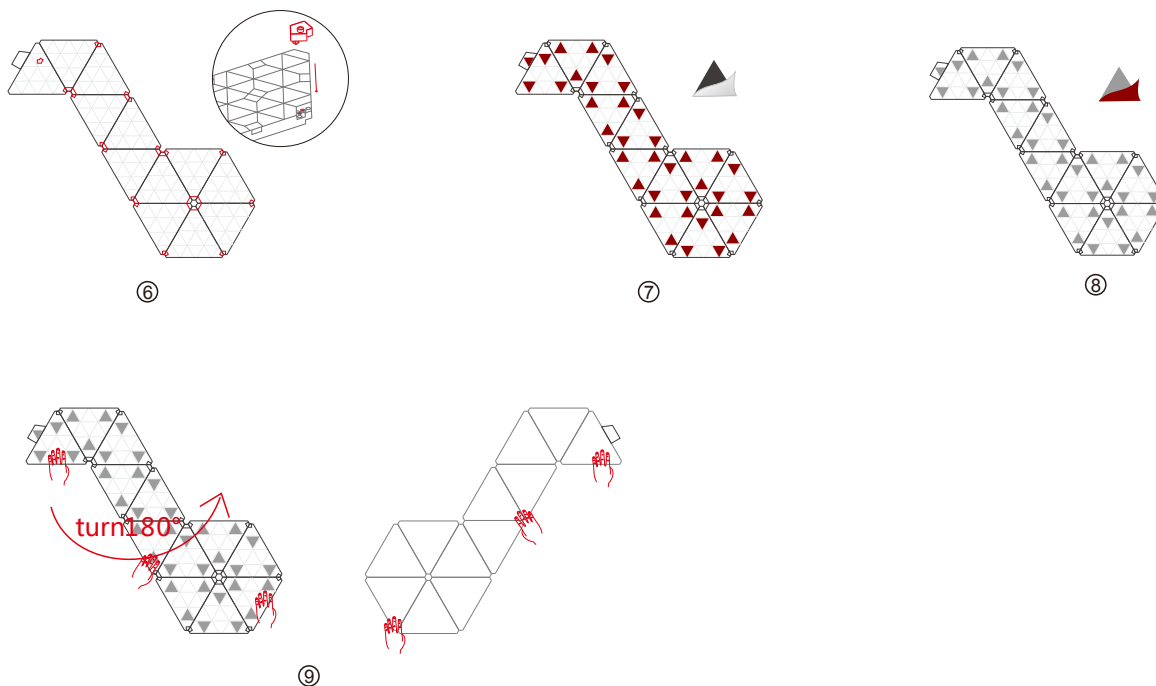
1. Download APP: the APP compatible with both Android and IOS system.
2. When connecting the triangle lamps, please connect each lamp according to the diagram 1-7.
3. Use the APP or remote control to control the lamps according to the instructions of the user manual.



- 1: Open the package, check whether the appearance is intact, and whether the number of accessories is correct: and design the shape according to your own preferences and set it up. Figure ① ②
- 2: Insert the connecting piece in order according to the initial position, insert the opposite port on any side of the next lamp body pointed by the arrow, and plug the arrow tail into the lamp body pair port (one input and one output are recommended for each lamp body). Picture ③
- 3: Complete the remaining lamp body splicing in sequence, and the controller connects to the 24V adapter to light up. picture ④
- 4: Download the APP (see page 7 for the method) and connect, test whether the whole light can be normally lit, switch, scene mode, customize whether the relevant instructions are executed normally, and the test is OK. picture ④
- 5: Turn over each piece of the lamp body in order, (Back) Spliced in the opposite direction (Make sure to insert it in accordance with step 3). Figure ⑤



- 6: Fix the fixing clips on the fixing holes of the two lamp bodies. Figure ⑥
- 7: Tear off the 3M double-sided adhesive white centrifugal paper and stick it on the 3 corners of the lamp body (each piece of 3PCS). Figure ⑦
- 8: Tear off all the red 3M adhesive. Figure ⑧
- 9: Determine the installation position, clean the surface, move it by (multiple people) as a whole, turn it 180°, let the light-emitting surface face the wall, and press the 3M glue surface tightly on the wall. Figure ⑨
- 10: Confirm the fixing is OK, plug in the adapter, and power on to enjoy the fun of lighting.



Package information

Model	Pcs/Set	Color Box size	Carton size	QTY/CTN	G.W/ctn
FWWSCB-33-6	6PCS	210x195x155 mm	445*410*335 mm	8/CTN	11 KG
FWWSCB-33-9	9PCS	210x195x205 mm	610*230*435 mm	8/CTN	16 KG
FWWSCB-33-12	12PCS	335x220x185 mm	460*355*390 mm	4/CTN	11 KG

Applications: Smart home lighting, Smart office, Hotel decorative lighting, Saloon and KTV ambient lighting, Landscape lighting and Advertising etc.

