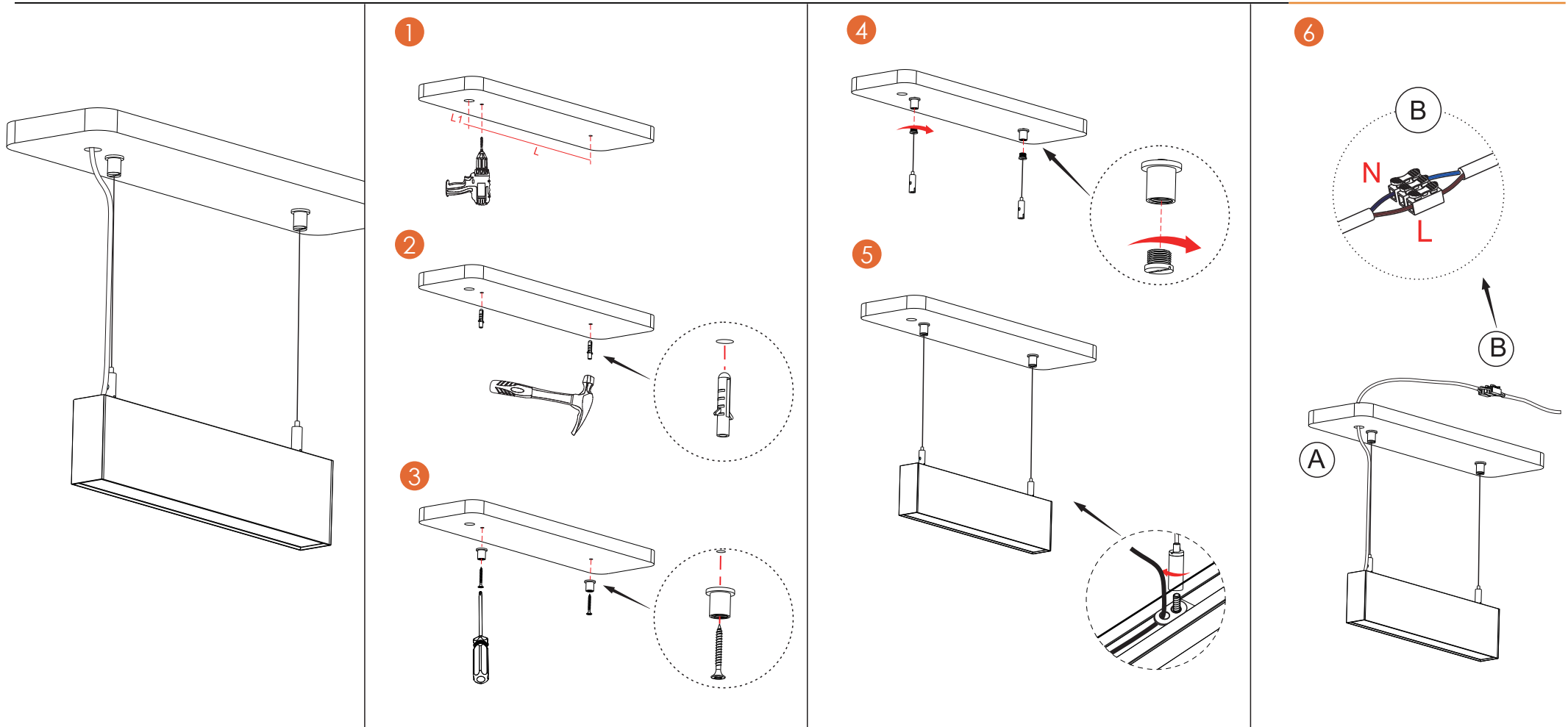


Installation Steps

- ① To confirm the distance L of drilling hole according to the length of the product: drill one more hole for the cable entry at the cable side, distance L1=50-80mm
- ② Hammering the screws to the holes
- ③ Fixed the clips by the screws
- ④ Cable A go through the cable hole. The slot of Lamp B align to the clips, push up hard and you will hear crisp sound(that means the lamp is fixed), shake the lamp hard to check if it is fixed tightly
- ⑤ The wires was connected with the input end by the connector, installation completed, turn on it to test

Attention:Read the following instructions before operating the luminaire

- CL lighting fixtures must be installed by a qualified electrician
- CL lighting is not responsible if its fixtures are not installed in accordance with all national and local safety standards.
- The electric source must be cut off before assembly & installation or remove
- The lighting fixture is used only for indoor, the aim to avoid the risk of fire or electric shock, please do not use it for outdoor, vibrant, dusty and high humidity environment
- The aim to make sure not to shorten the life time of lighting fixture and keep safety, please do not modify, add or change any components.
- Please cut off electric source immediately if any abnormality occur, so that avoid any danger or malfunction, after that lighting fixtures must be checked and repaired by professional technician

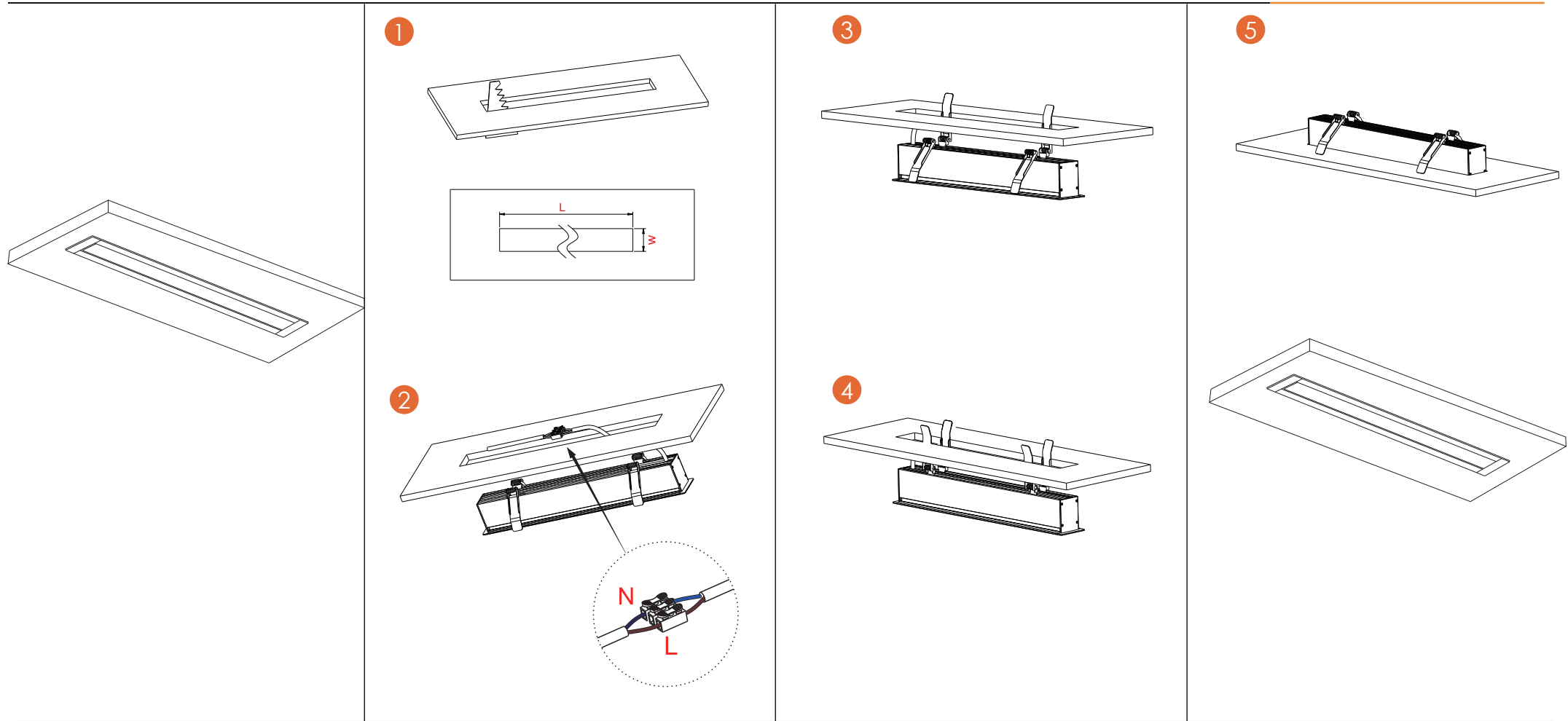


Installation Steps

- 1 To confirm the distance L of drilling hole according to the length of the product: drill one more hole for the cable entry at the cable side, distance L1=50-80mm.
- 2 Hammering the screws to the holes.
- 3 Putting screw into the bolt and tighten the bolt with cross screwdriver, then fix the mounting fixture on the ceiling.
- 4 Tightening the steel hanging rope into the ceiling mounting fixture.
- 5 Putting the AC cable through another hole of the "8" shape buckle on the light , and adjust the buckle to suitable position and tighten the wire clamp clockwise.
- 6 Fixing cable A with the hanging rope then put it through the hole into ceiling. The wires was connect-ed with the input end by the connector. Adjust the height of light to be available and turn on it to test.

Attention: Read the following instructions before operating the luminaire

- CL lighting fixtures must be installed by a qualified electrician
- CL lighting is not responsible if its fixtures are not installed in accordance with all national and local safety standards.
- The electric source must be cut off before assembly & installation or remove
- The lighting fixture is used only for indoor, the aim to avoid the risk of fire or electric shock, please do not use it for outdoor, vibrant, dusty and high humidity environment
- The aim to make sure not to shorten the life time of lighting fixture and keep safety, please do not modify, add or change any components.
- Please cut off electric source immediately if any abnormality occur, so that avoid any danger or malfunction, after that lighting fixtures must be checked and repaired by professional technician



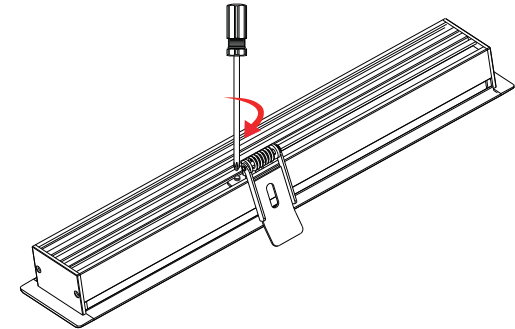
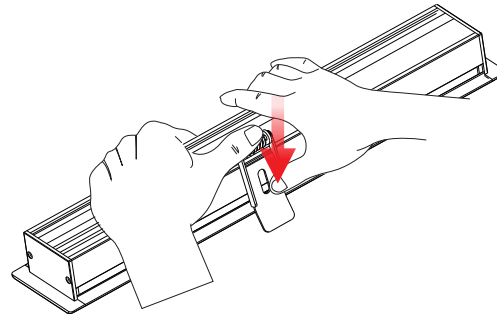
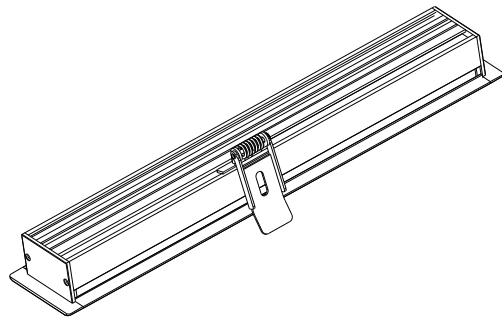
Installation Steps

- ① To confirm the installation hole according to the actual size of embedded part
- ② The wires was connected with the input end by the connector
- ③ Opening one side of spring buckle and lean the buckles against the board
- ④ Opening another side of spring buckle and put them down after through the hole completely
- ⑤ Installation completed, turn on it to test

Attention: Read the following instructions before operating the luminaire

- CL lighting fixtures must be installed by a qualified electrician
- CL lighting is not responsible if its fixtures are not installed in accordance with all national and local safety standards.
- The electric source must be cut off before assembly & installation or remove
- The lighting fixture is used only for indoor, the aim to avoid the risk of fire or electric shock, please do not use it for outdoor, vibrant, dusty and high humidity environment
- The aim to make sure not to shorten the life time of lighting fixture and keep safety, please do not modify, add or change any components.
- Please cut off electric source immediately if any abnormality occur, so that avoid any danger or malfunction, after that lighting fixtures must be checked and repaired by professional technician

Assembly way A for spring buckle

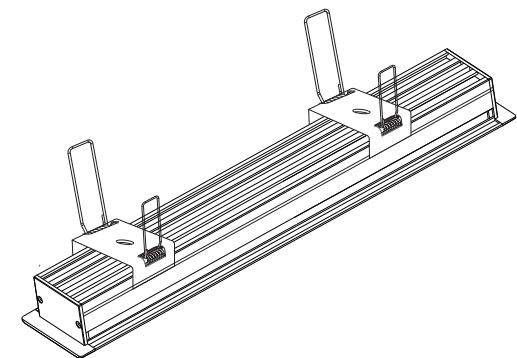
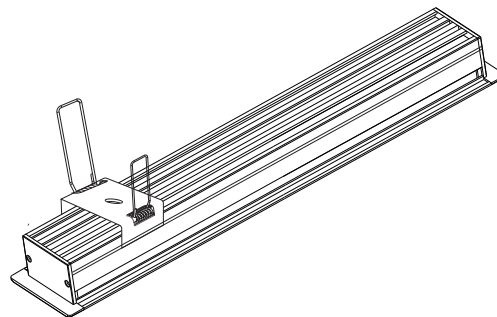
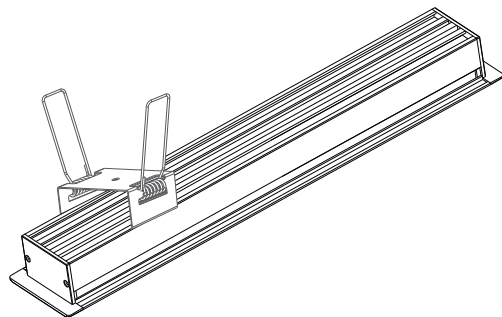


1 Tilting the fixing clip into the slot

2 One hand to hold the spring buckle and the other hand to press it down harder (as shown in the figure)

3 Tighten the screws. Installing other buckles in the same way

Assembly way B for spring buckle



1 The buckle needed to align with one side of slot and stuck into it

2 Moving the buckle to another side of slot and stuck into it

3 Installing other buckles in the same way